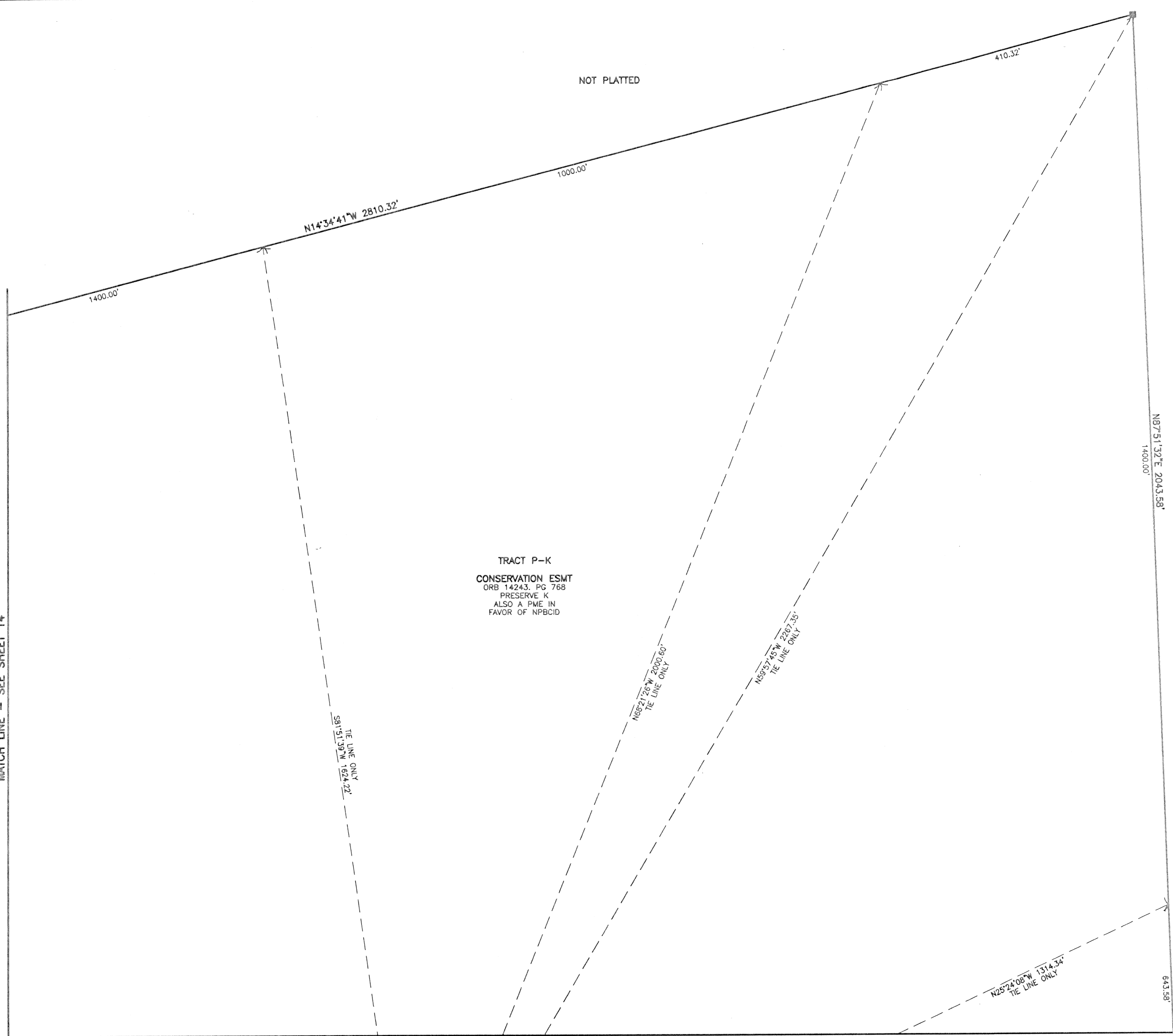
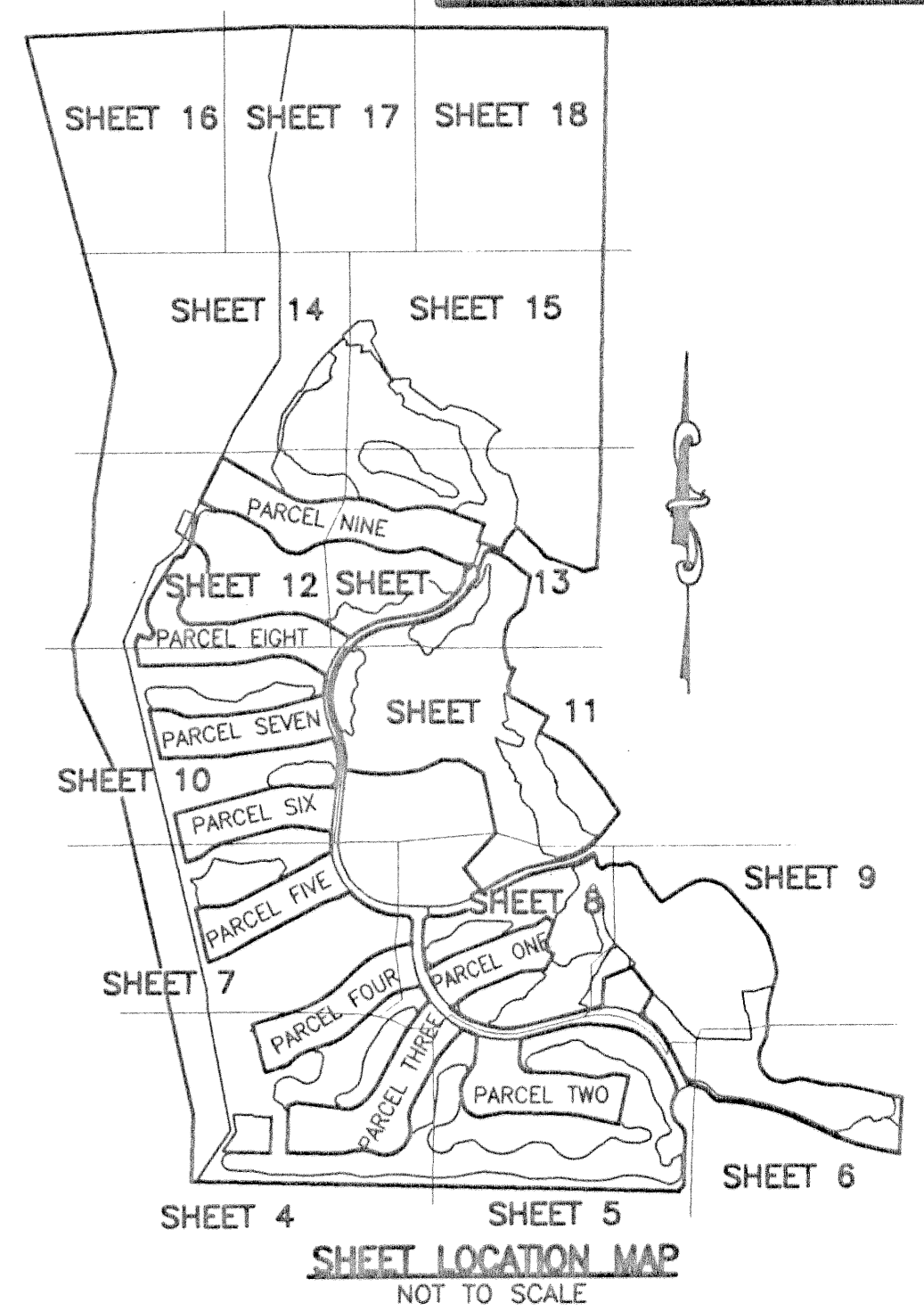


STATE OF FLORIDA
COUNTY OF PALM BEACH
THIS PLAT WAS FILED FOR
RECORD _____ DAY OF _____
AD, 2003 AND DULY RECORDED
IN PLAT BOOK _____ ON PAGES
_____ THROUGH _____
BY: DOROTHY H. WILKEN, CLERK, D.C.

CIRCUIT COURT SEAL



MIRASOL PLAT FIVE

PART OF GOLF DIGEST P.C.D.
BEING IN SECTIONS 32 AND 33, TOWNSHIP 41 SOUTH, RANGE 42 EAST,
AND SECTIONS 04 AND 05, TOWNSHIP 42 SOUTH, RANGE 42 EAST,
CITY OF PALM BEACH GARDENS, PALM BEACH COUNTY, FLORIDA
SHEET 16 OF 19

LEGEND

AE	ACCESS EASEMENT
Δ	CENTRAL (DELTA) ANGLE
CBE	CART BRIDGE EASEMENT
CH	CHORD
DE	DRAINAGE EASEMENT
ESMT	EASEMENT
IEE	INGRESS/EGRESS EASEMENT
FPL	FLORIDA POWER AND LIGHT ARC LENGTH
L	LANDSCAPE EASEMENT
LE	MIRASOL MASTER MAINTENANCE ASSOCIATION
MMMA	NORTHERN PALM BEACH COUNTY IMPROVEMENT DISTRICT
NPBCID	OFFICIAL RECORD BOOK
ORB	PUBLIC PEDESTRIAN ACCESS EASEMENT
PPAE	PEDESTRIAN ACCESS EASEMENT
PAE	PLAT BOOK
PB	PLANNED COMMUNITY DEVELOPMENT PAGE(S)
PCD	PRESERVE MAINTENANCE EASEMENT
PG(S)	RADIUS
PME	SEWER LINE EASEMENT
R	SEACOAST UTILITY AUTHORITY
SLE	WATER LINE EASEMENT
SUA	WATER MANAGEMENT ACCESS EASEMENT
WLE	WATER MANAGEMENT EASEMENT
WMAE	WATER MANAGEMENT MAINTENANCE EASEMENT
WME	CENTERLINE REFERENCE MONUMENT
WMM	SET LB-048 (4"x4" CONCRETE)
	PERMANENT REFERENCE MONUMENT
	FOUND LB-048 (4"x4" CONCRETE)
	UNLESS NOTED OTHERWISE
	WITNESS MONUMENT SET
	LB-048 (4"x4" CONCRETE)

THIS INSTRUMENT WAS PREPARED BY MARY HANNA CLODFELTER, P.S.M. IN THE OFFICES OF MOCK, ROOS & ASSOCIATES, INC., 5720 CORPORATE WAY, WEST PALM BEACH, FLORIDA 33407.

SCALE:
1" = 80'
P.A. NO.:
99367.00
DATE:
MAY, 2002
DRAWING NO.:
41-42-32-59

FLORIDA L.B. NO. 48

MOCK ROOS
ENGINEERS & PLANNERS

5720 Corporate Way, West Palm Beach, Florida 33407
(561) 683-3113, fax 478-7248

SHEET 16 OF 19
MIRASOL PLAT FIVE
PART OF GOLF DIGEST P.C.D.
BEING IN SECTIONS 32 AND 33,
TOWNSHIP 41 SOUTH, RANGE 42 EAST,
AND IN SECTIONS 04 AND 05,
TOWNSHIP 42 SOUTH, RANGE 42 EAST,
CITY OF PALM BEACH GARDENS,
PALM BEACH COUNTY, FLORIDA

S:\proj\New\gcp5\gcp5rpo3.dwg - 12/23/2002 - 5:23:18 PM EST

REV: 12-23-02
CAD FILE:
TAYLGGP5\GCP5RPO3